

BACKVENTIL

Material:

Ventilhus och lock: Gjutjärn, GGG-40 enl. DIN 1693

Skrivar, muttrar och brickor: Rostfritt stål, A2

Lock tätning: NBR O-ring

Tryckklass: PN 10

Flänsar och borrning: Enl. ISO 7005-2
PN10 borrning för ansl. 50–500

Vätsketemperatur: max. + 70 °C

Ytbehandling: Epoxymålning

För reservkula se intern standard M2595.98.0002



CHECK VALVE

Material:

Body and cover: Ductile iron, GGG-40 acc. to DIN 1693

Bolts, nuts and washers: Stainless steel, A2

Cover gasket: NBR O-ring

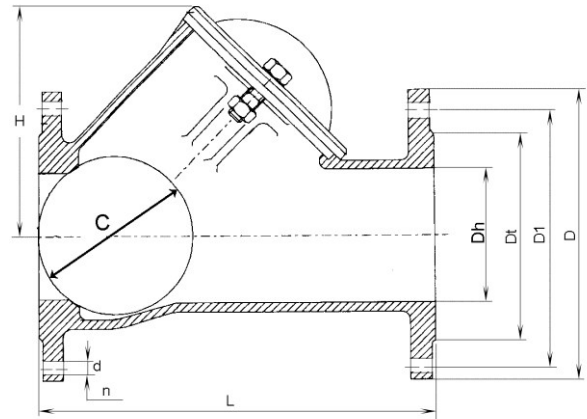
Nominal pressure: PN 10

Flanges and drilling: Acc. to ISO 7005-2
PN10 drilling for connection 50–500

Liquid temperature: max. + 70°C

Treatment: Epoxy painting

For spare balls see internal standard M2595.98.0002



Upphöjd fläns / Raised faces

Flänsbörning/ Flange drilling	Dh	Dt	D	D1	C	H	L	n	d	Vikt/ Weight	Artikelnummer/ Part number
DN	mm	mm	mm	mm	mm	mm	mm	Antal hål/ No of hole	mm	kg	
50	50	98	165	125	60	101	200	4	19	7,5	83 20 16
65	80	118	185	145	95	148	230	4	19	12,0	83 20 17
80	80	133	200	160	95	148	260	8	19	13,0	83 20 18
100	100	159	220	180	120	182	300	8	19	18,0	83 20 19
125	150	183	250	210	175	251	350	8	19	30,5	83 20 20
150	150	209	285	240	175	251	400	8	23	37,5	83 20 21
200	200	268	340	295	240	333	500	8	23	70,0	83 20 22
250	250	319	400	350	300	406	600	12	23	128,0	83 20 23
300	300	367	455	400	360	480	700	12	23	187,0	83 20 24
350	350	427	505	460	420	571	800	16	23	300,0	83 20 25
400	400	482	565	515	480	657	900	16	28	410,0	83 20 26

Ed.	Revision
5	"Flange connection DN" replaced by "Flange drilling DN", New column Dh.